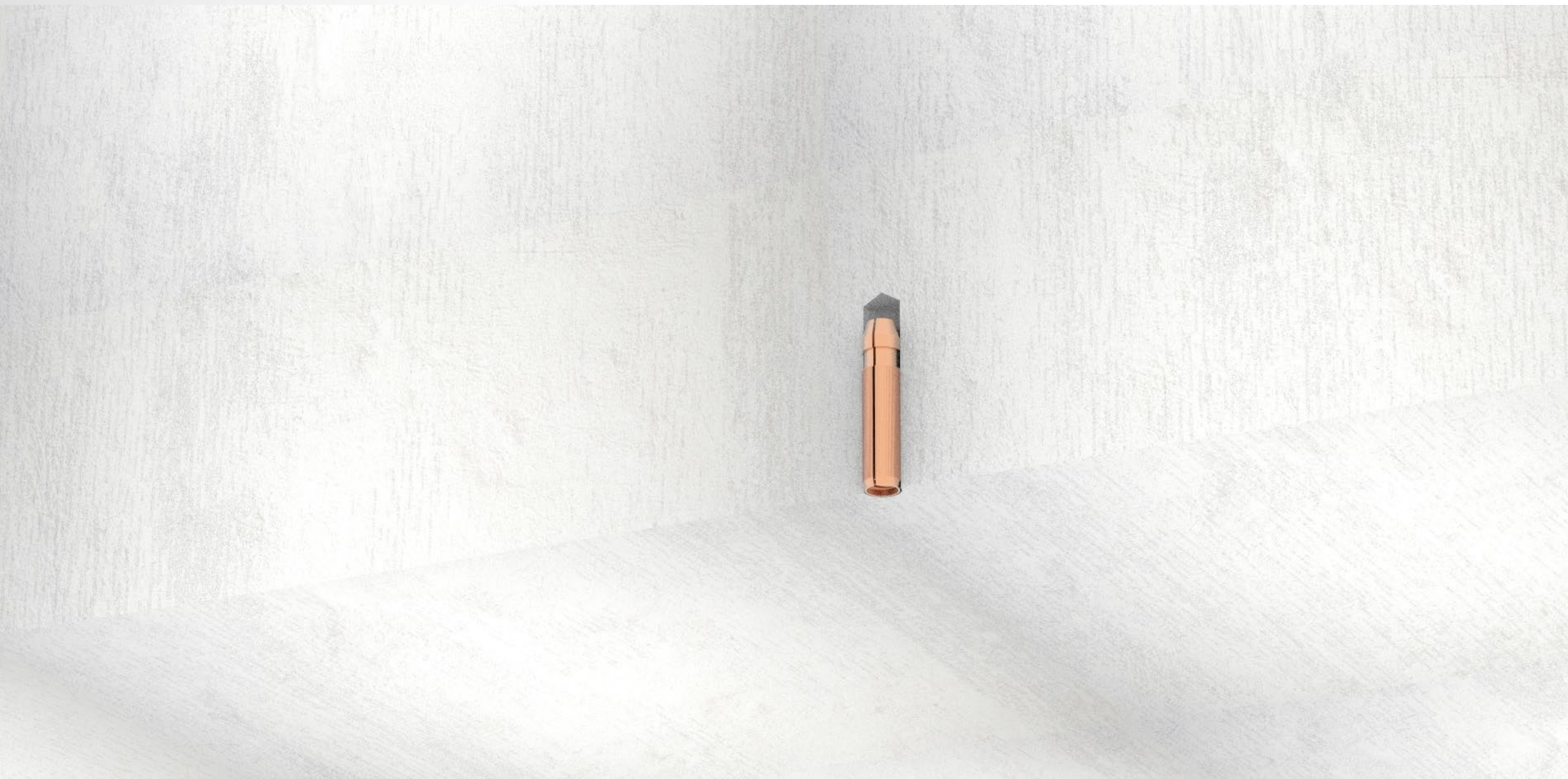




**INSTALLATION OF ST + SYLOMER®**  
**AMC Mecanocaucho**

# 1: PLACE THREADED PLUGS IN THE SLAB

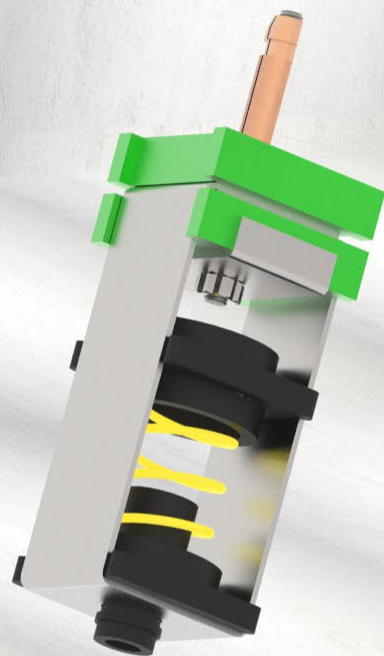




## 2: PLACE THREADED RODS IN THE PLUGS



# 3: FIX THE HANGER TO THE RODS



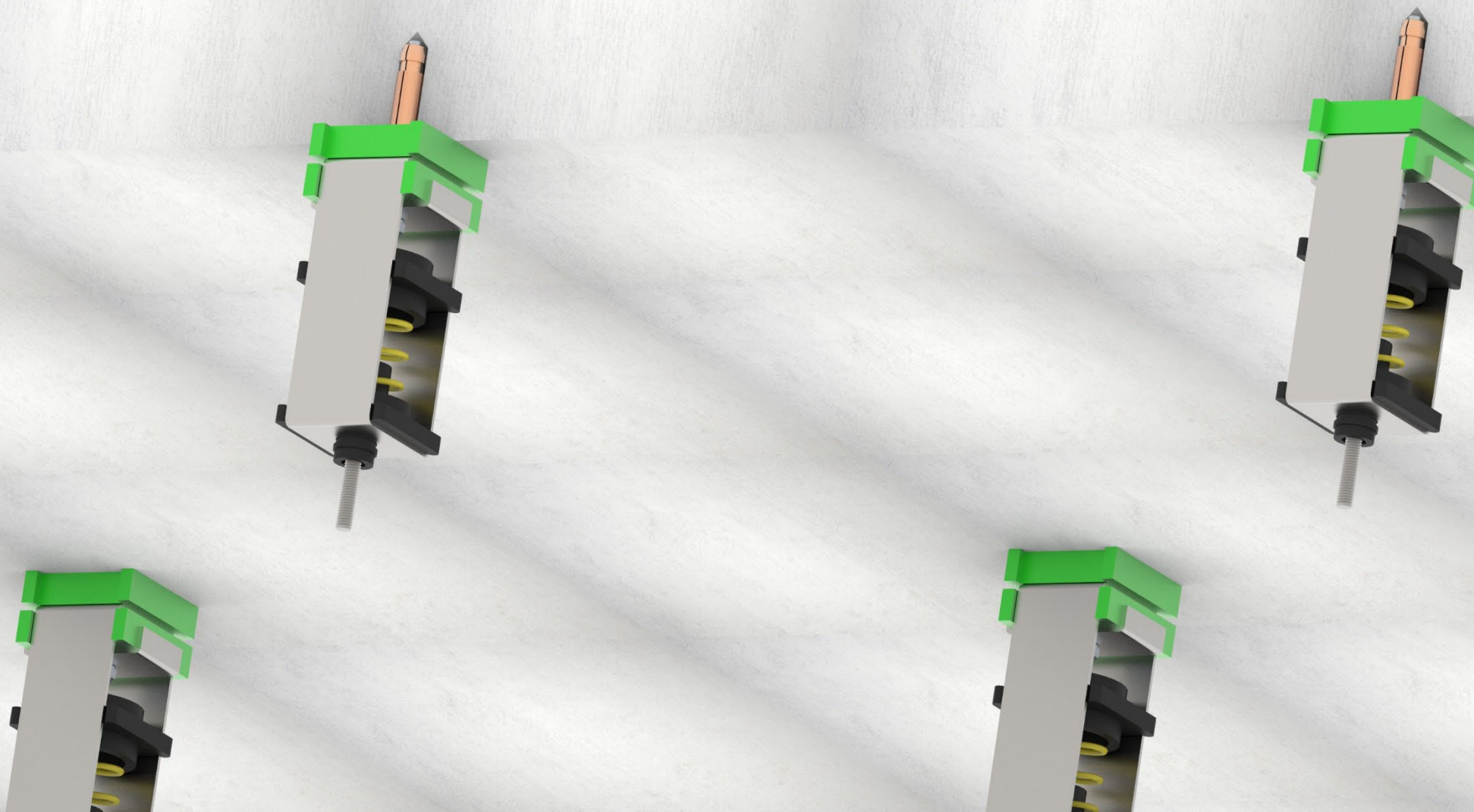
Max compresión of the  
Sylomer pads = 2mm



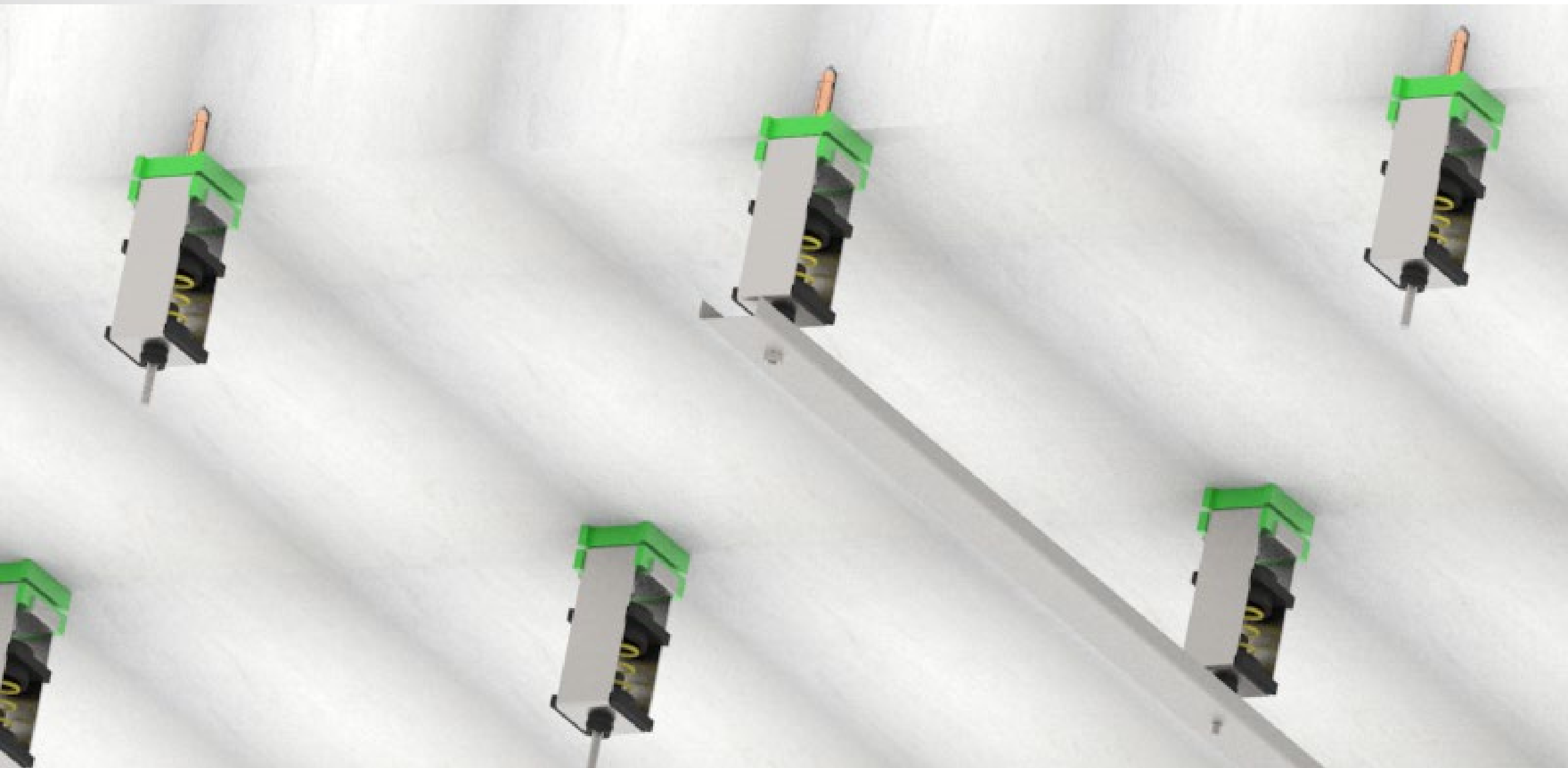


# 4: ADD THE RODS UNDER THE HANGERS

(can be done before fixing the hangers to the top rods)

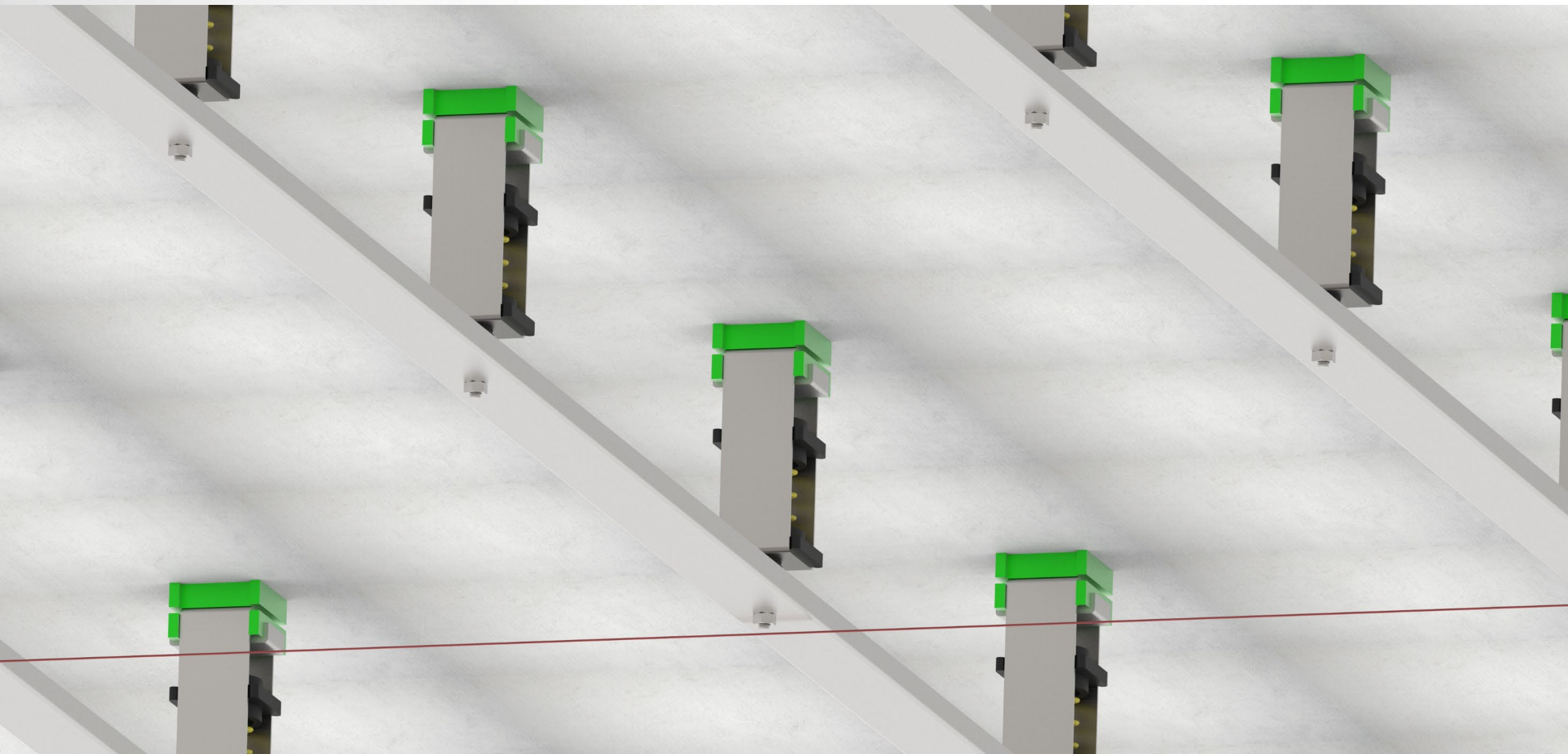


# 5: FIX THE PROFILES TO THE RODS





# 6: CHECK ALL PROFILES ARE CORRECTLY LEVELED



# 7: ADD THE TRANSVERSAL PROFILES

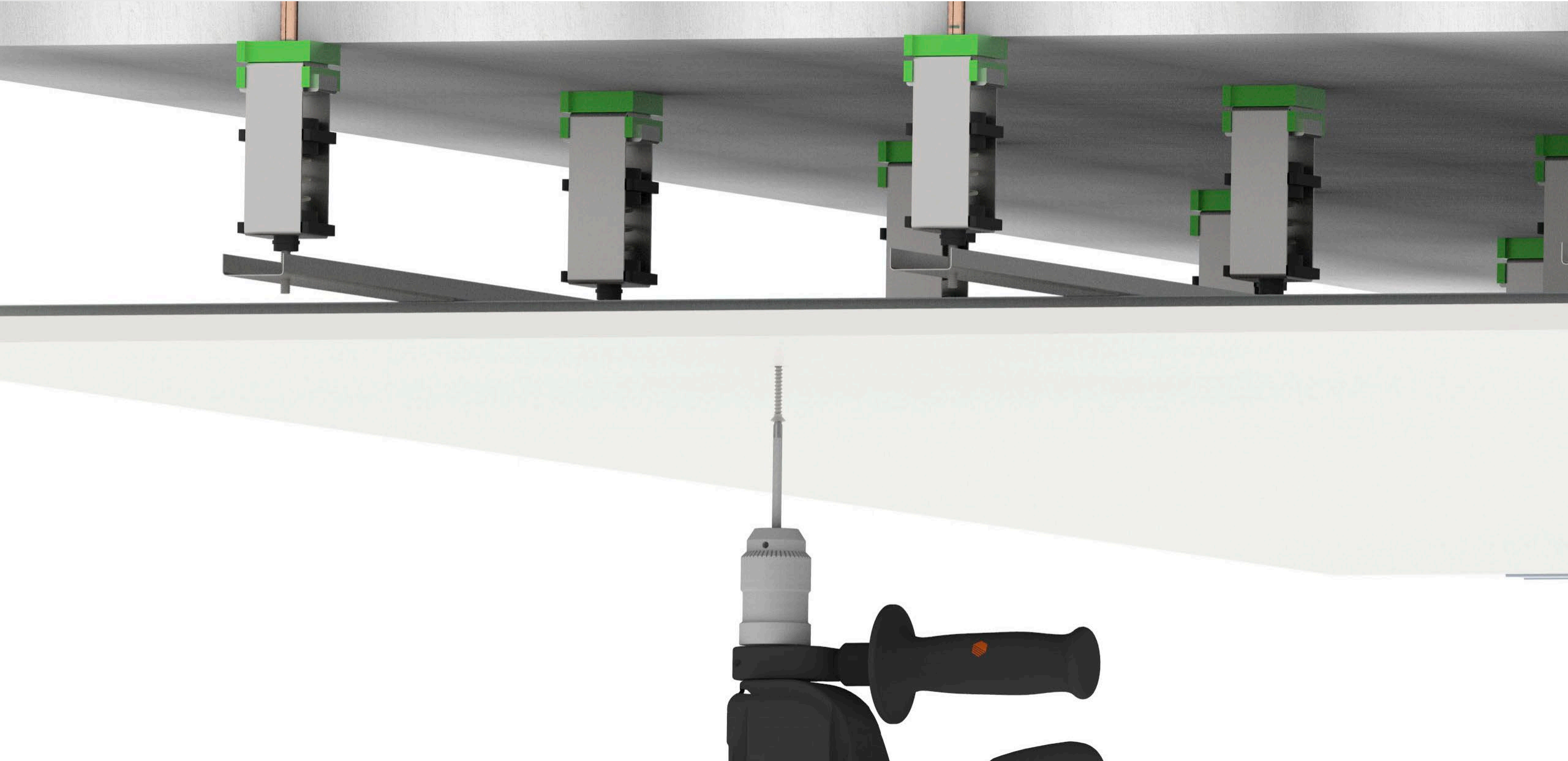




# 8: FIX ALL PROFILES

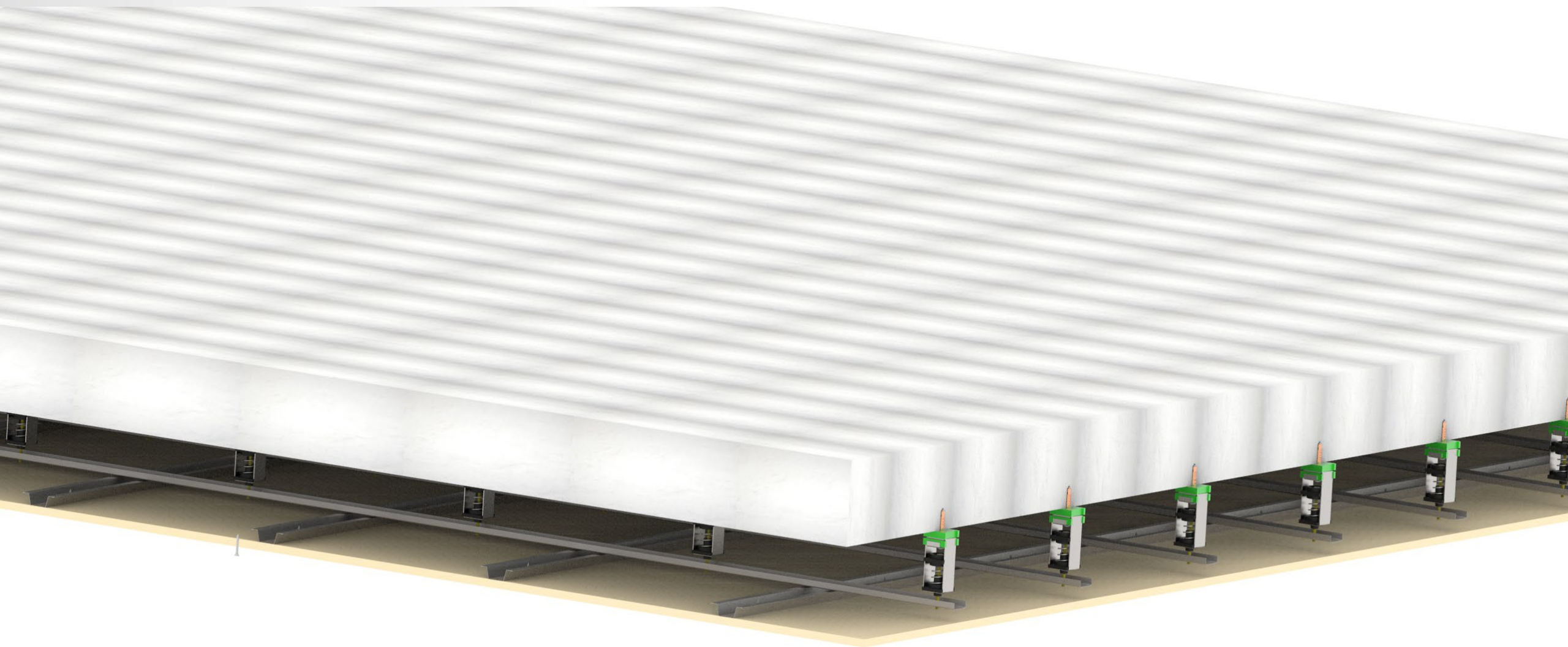


# 9: FIX THE PLASTERBOARD PLATES





# 10: ALL PLASTERBOARD PLATES FIXED



FREE TECHNICAL SUPPORT AVAILABLE UPON REQUEST

